

This page explain you the procedure of the firmware installation on VS-R45.  
VS-R45 now supports Panasonic AV-HS 450, AV-HS400A and AV-HS410N.

※Remark 1:

This new firmware supports AV-HS450, AV-HS400A and AV-HS410N.

You can select the AV-HS450, AV-HS400A and AV-HS410N be setting of MODE SW which is located on the real panel of VS-R45.

※Remark 2:

The version of service application is now updated as well.

Please use the version of service application 200 and higher.

This is the example of the version 200 of service application.

vs\_r45\_service\_api\_200.exe

### 1. Preparation for firmware installation:

Please prepare the following items.

- (1) VS-R45
- (2) PC with Windows OS
- (3) LAN cable (LAN cross cable is required for pier to pier connection)
- (4) Service application program
- (5) Installation software

Remark:

Service application program and installation software is available on Venetex homepage.

Please download from homepage and store on your PC.

Venetex homepage : <http://www.venetex.jp/english>.

The process of download and installation relies on your cautious procedures.

Please pay attention to your work which Venetex could not assume responsibility.

### 2. Connection method with PC and VS-R45

Please connect VS-R45 with PC through LAN cross cable.

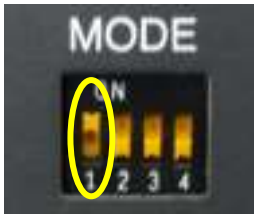
Remark:

If you connect VS-R45 with PC through LAN HUB unit, you can use either LAN cross cable or LAN straight cable.



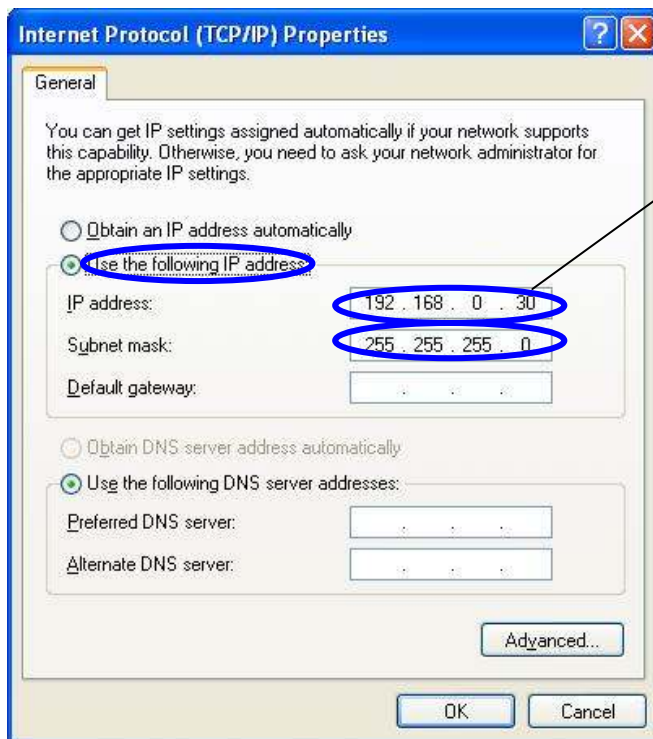
3. Pin 1 of SW1 and Power on of VS-R45:

Please tune Pin 1 to “on” position of the MODE switch 1 which is located on the real panel of VS-R45.  
Please refer to the attached picture.  
Then connect AC power plug to VS-R45.  
It means “Power ON”.



4. IP address setting through Internet Protocol (TCP/IP)

Open Internet Protocol (TCP/IP) and open Property.  
Setting of IP address is as follows



Please set as follows

5. Preparation for Service Application Program :

Download Service Application software form Venetex homepage.

<http://www.venetex.jp/english>

This Icon of Service Application software“vs\_r45\_service\_api\_200.exe”is on Desktop screen.

Double click the Icon “vs\_r45\_service\_api\_200.exe”.



Double click this ICON by the left mouse button

6. Service application program is now starting.

Click “Read” button. You can confirm IP address of VS-R45.

After confirmation, please click “Firmware Update” button.

※Remark:

It is no need to have IP address for AV-HS400A connection.

Please confirm the service application version 2.00 or higher.

VS-R45 IP address setting...  
One AV-HS450 or AV-HS410 can be operated by maximum of four units of VS-R45.  
Please note that each IP address of VS-R45 must be different.

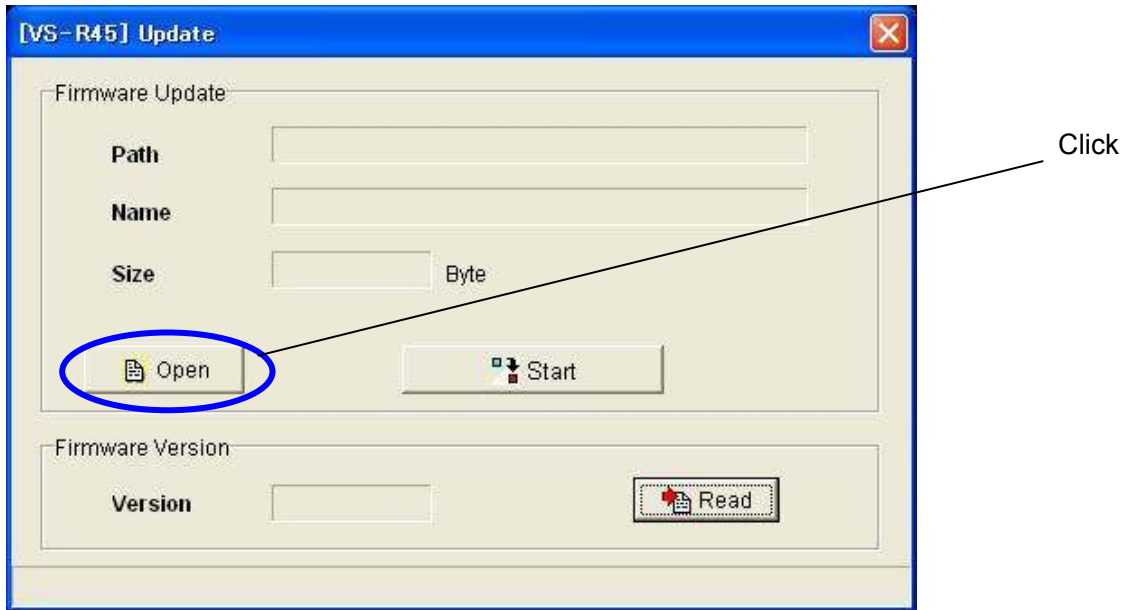
Use the IP address of connected AV-HS450 or AV-HS410N.  
Enter the same number of AV-HS450 or AV-HS410N IP address.

Please set to AV-HS450 or AV-HS410N Subnet Mask number.

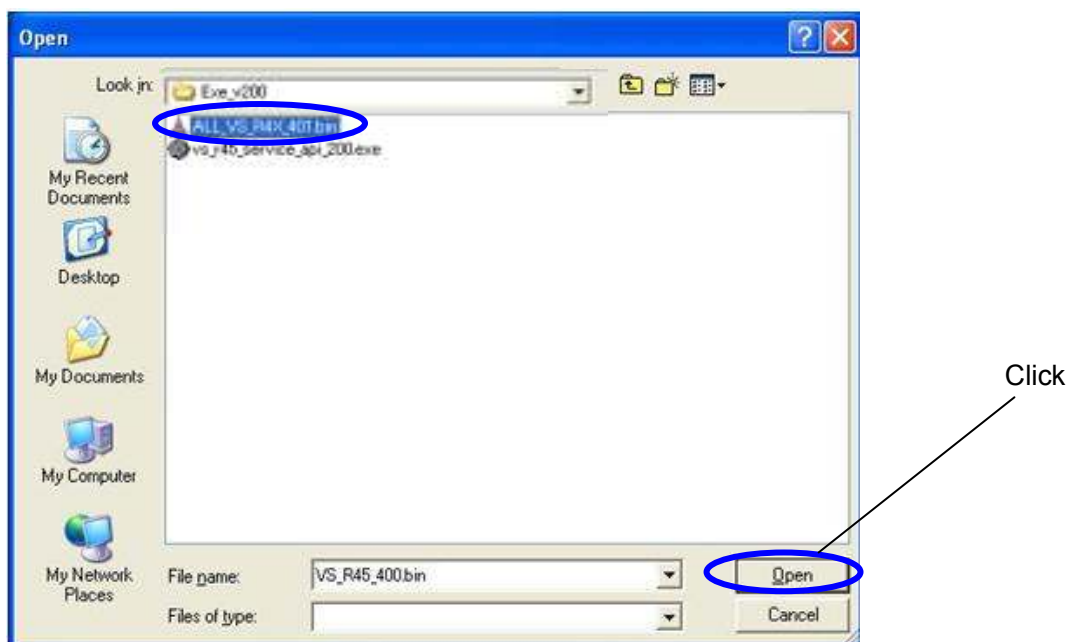
Fix as 0.0.0.0

Fix as 224.0.0.200

7. For starting installation, Please click “Open” button.



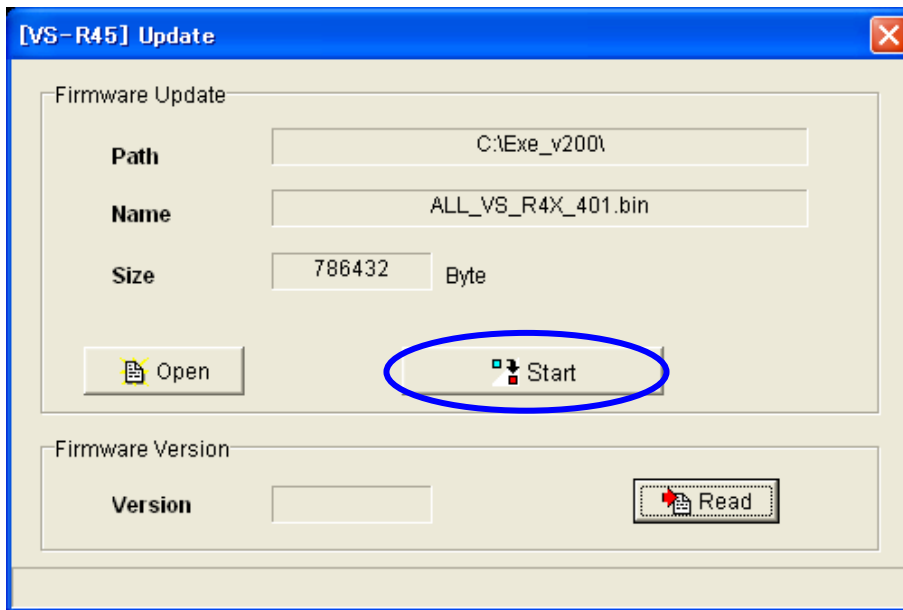
Then, select the firmware which you want to update.  
Then, click “Open” button.



※Remarks:

Firmware file name ALL\_VS\_R4X\_4XX.bin is different based on version number.  
4XX means the version number.

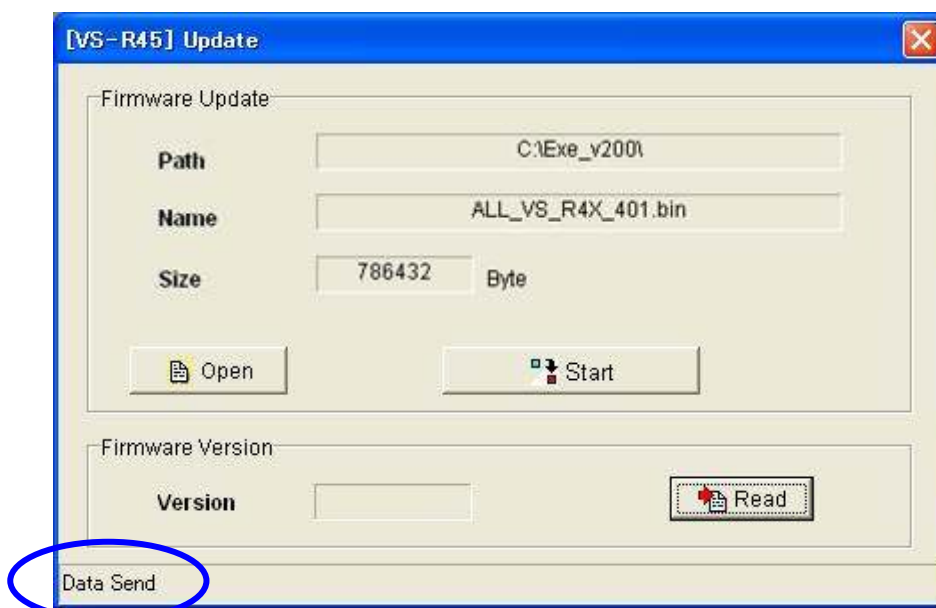
8. Please reconfirm the firmware name for installation.  
Then, click the “Start” button.



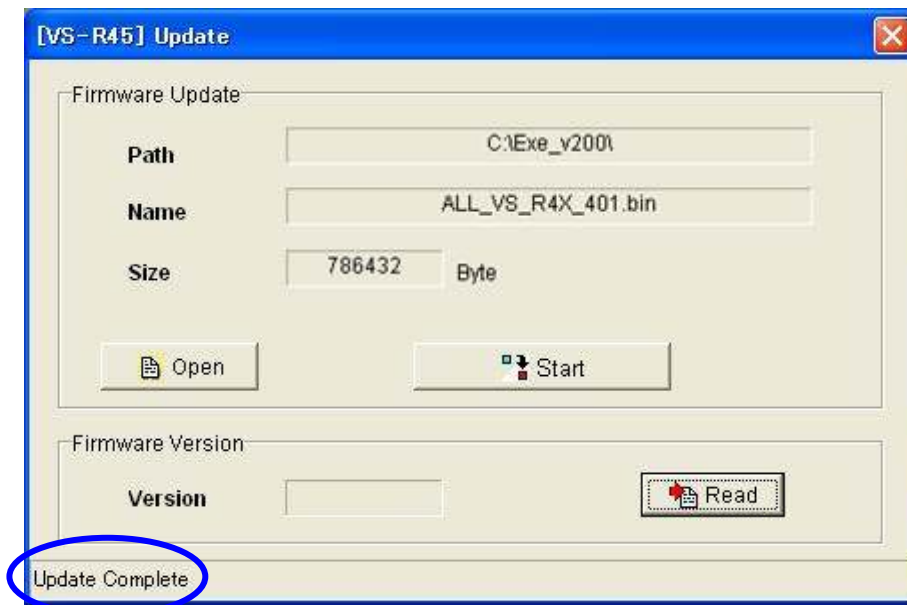
9. Firmware update confirmation graphic as below is shown.  
Please click “Yes” button.



10. During the installation Data Send screen as below is shown.



11. When “Update Complete” is shown on states bar, it means installation is completed.



12. MODE SW position and the relation among Panasonic AV-HS450, AV-HS400A and AV-HS410N. Connection of Panasonic AV-HS450, AV-HS400A and AV-HS410N is done by the switch 2 and 3.



No	Type of Operation	Setting
1	Setting change for IP address setting and Firmware update	OFF: Normal position ON: Use for IP address setting and firmware update
2	Switch select	<b>2:OFF 3:OFF for AV-HS450</b>
3		<b>2:OFF 3:ON for AV-HS410N</b> <b>2:ON 3:OFF for AV-HS400A</b> <b>2:ON 3:ON for Prohibit the selection</b>
4	Disabling PGM/A, PST/B	OFF: PGM/A, PST/B Bus selection is available ON: PGM/A, PST/B Bus selection is prohibited

13. Restart

Please turn Pin 1 to “OFF “on the MODE switch 1 located on the real panel of VS-R45. And disconnect AC power plug from the socket. It means Power OFF. Then connect AC power plug to VS-R45 .It means Power ON. It is completed.

